



RESIDENCE

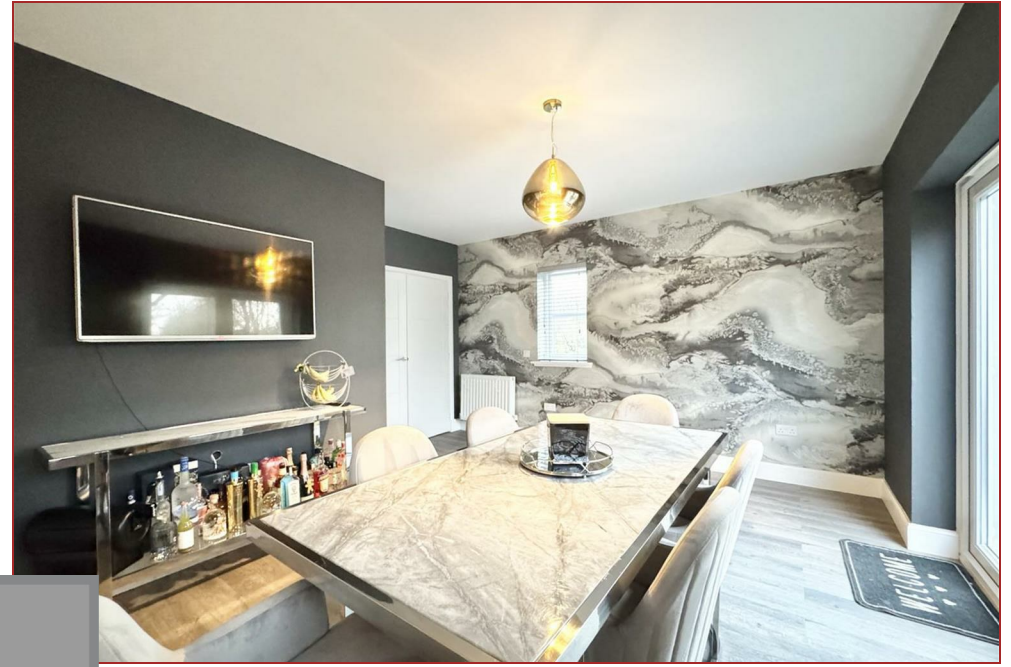
1 Broomhouse Drive, Uddingston, G71 7SW

www.residenceestateagents.co.uk



Viewing by appointment with Residence Uddingston

T: 01698 444222 | E: uddingston@residenceestateagents.co.uk | A: 61-63 Main Street, Uddingston, G71 7EP



RESIDENCE





4 Bedrooms | 1 Public Rooms | 4 Bathrooms

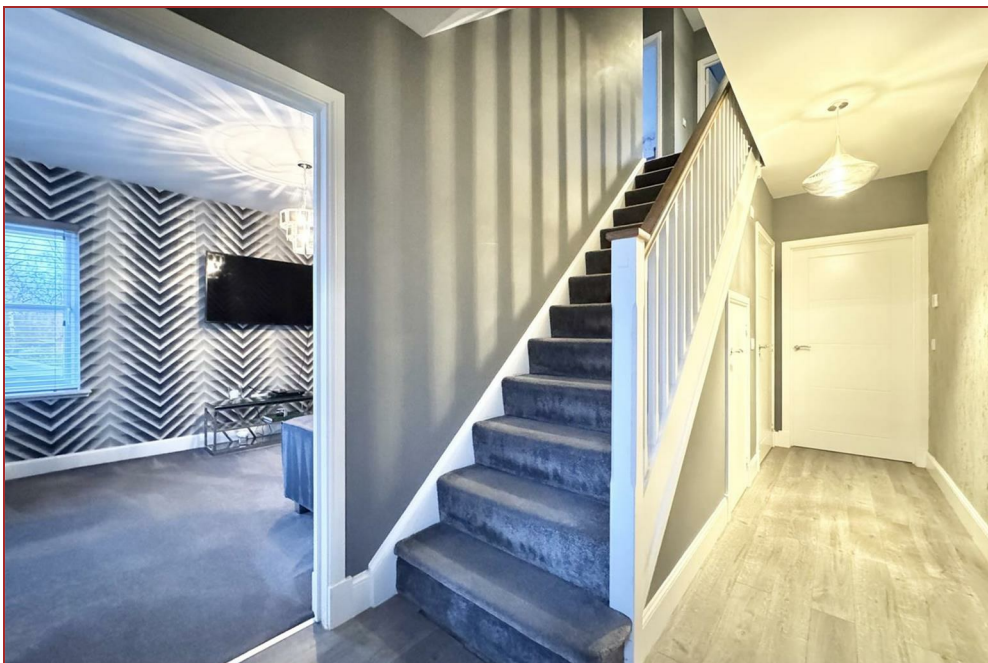
This impressive four bedroom detached villa is set within a popular and sought-after residential pocket of Uddingston on Broomhouse Drive, offering spacious and versatile family accommodation formed over two levels.

On entering the property, a welcoming reception hallway gives access to a bright and generously proportioned lounge, enhanced by a large bay window that allows an abundance of natural light to flood the room. To the rear, the heart of the home is the expansive dining kitchen and family area, providing an excellent space for modern family living and entertaining, with ample room for dining and seating. Completing the ground floor accommodation is a convenient WC.

The upper level comprises four well-appointed bedrooms. The principal bedroom benefits from its own en-suite shower room, while bedrooms three and four are served by a stylish Jack and Jill shower room, making this layout ideal for families. A contemporary family bathroom completes the accommodation on this level.

Externally, the property is further enhanced by well-maintained gardens. To the front there is a neat lawn and a driveway providing off-street parking for two vehicles, leading to the integral garage. The substantial rear garden is fully enclosed, offering excellent privacy, and features a combination of lawn and decking, creating an ideal space for outdoor dining, relaxation and family enjoyment.

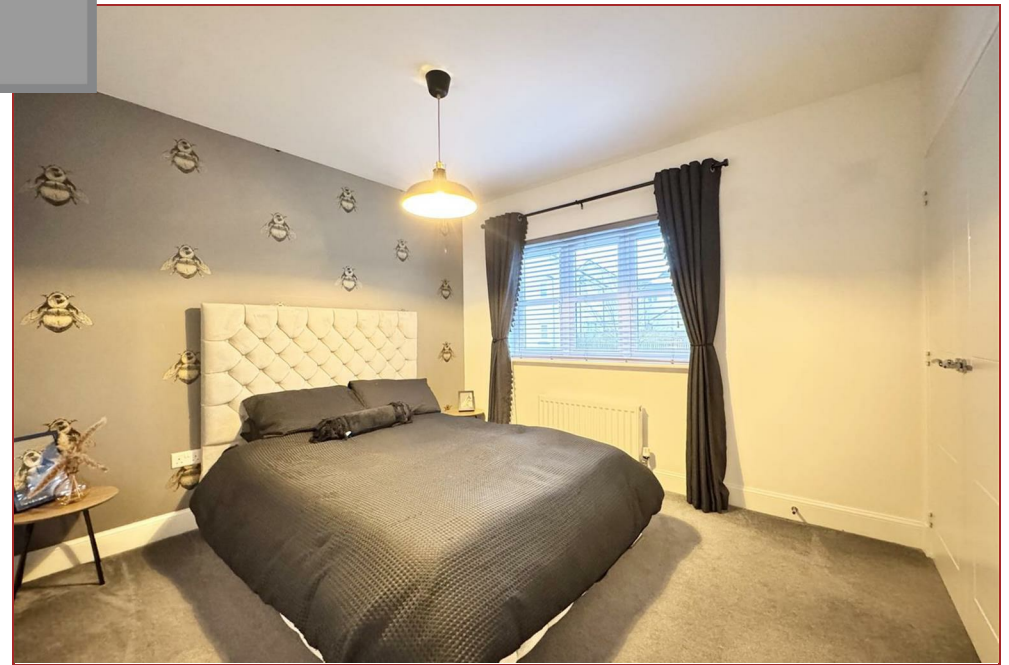
This attractive home combines generous living space, modern conveniences and an excellent location close to local amenities, schools and transport links, making it an ideal choice for growing families.



sq ft | EER =



RESIDENCE





RESIDENCE







Broomhouse Crescent



Floor Plan measurements are approximate and are for illustrative purposes only. While we do not doubt the floor plans accuracy, we make no guarantee, warranty or representation as to the accuracy and completeness of the floor plan. You or your advisors should conduct a careful, independent investigation of the property to determine to your satisfaction as to the suitability of the property for your space requirements.

Produced by Plush Plans Ltd

We believe these details to be accurate; however, they do not form any part of a contract. Fixtures and fittings are not included unless specified in the enclosed. Photographs are for general information and it must not be inferred that any item is included for sale with the property. All distances and measurements are approximate. Floorplans may not be to scale and are for illustration purposes only.